

# RESIDENTIAL LAND FOR SALE

3000 W. 131st Street | Carmel, IN 46032



## Excellent Redevelopment Opportunity in Highly Desired Carmel, Indiana

Land:	6.54 Acres
Zoning:	Residential
Utilities:	At the Site
List Price:	\$1,250,000

[VIEW PROPERTY ONLINE](#)

### Details:

6.54 acres is available for redevelopment in Carmel, Indiana. The property currently has a 2,930 SF single family home with a barn on it, so utilities are at the site and ready for redevelopment. The property has 459' of frontage on W. 131st Street to the south, and 459' of frontage on Lincolnshire Blvd. to the north. These multiple access points, residential zoning, and excellent location makes this property an ideal area to develop a multi-family complex.



# NAI Cressy

P 317.875.8888 | [CRESSY.COM](http://CRESSY.COM)

3502 Woodview Trace, Suite 250 | Indianapolis, IN 46268

Connect with us! [in](#) [tw](#) [f](#) [yt](#)

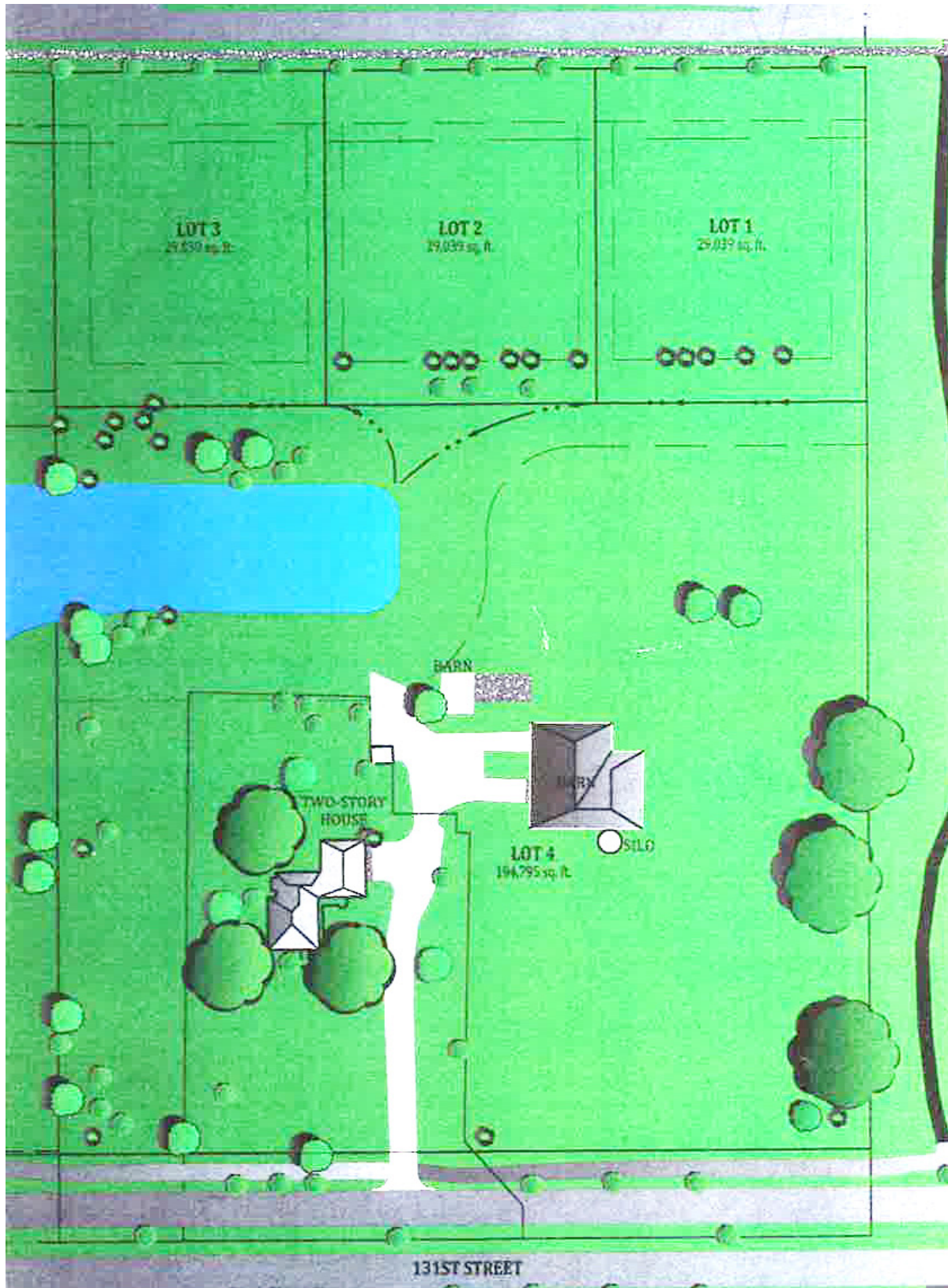
Information furnished regarding property for sale, rental or financing is from sources deemed reliable. But no warranty or representation is made as to the accuracy thereof and same is submitted subject to errors, omissions, change of price, rental or other conditions, prior sale, leased, financing or withdrawal without notice. No liability of any kind is to be imposed on the broker herein. NAI Cressy is the Global Brokerage Division of Cressy Commercial Real Estate.

**Marc Jaffe, Senior Broker**

D 317.201.5046

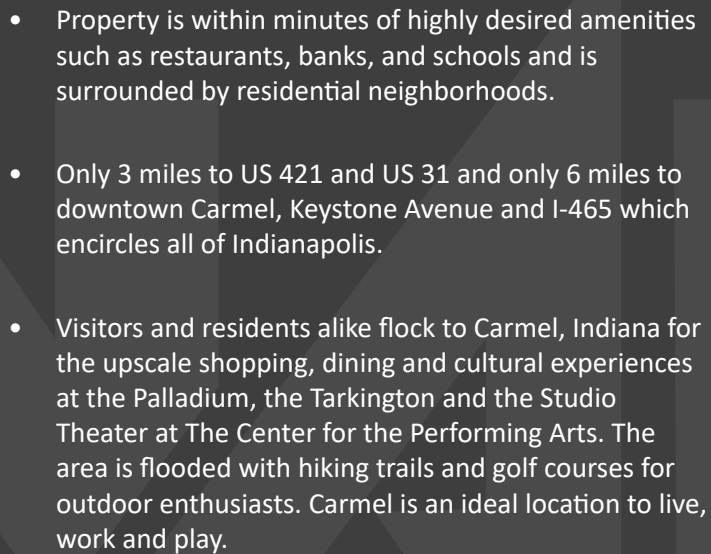
[mjaffe@cressy.com](mailto:mjaffe@cressy.com)







3000 W. 131st Street | Carmel, IN 46032



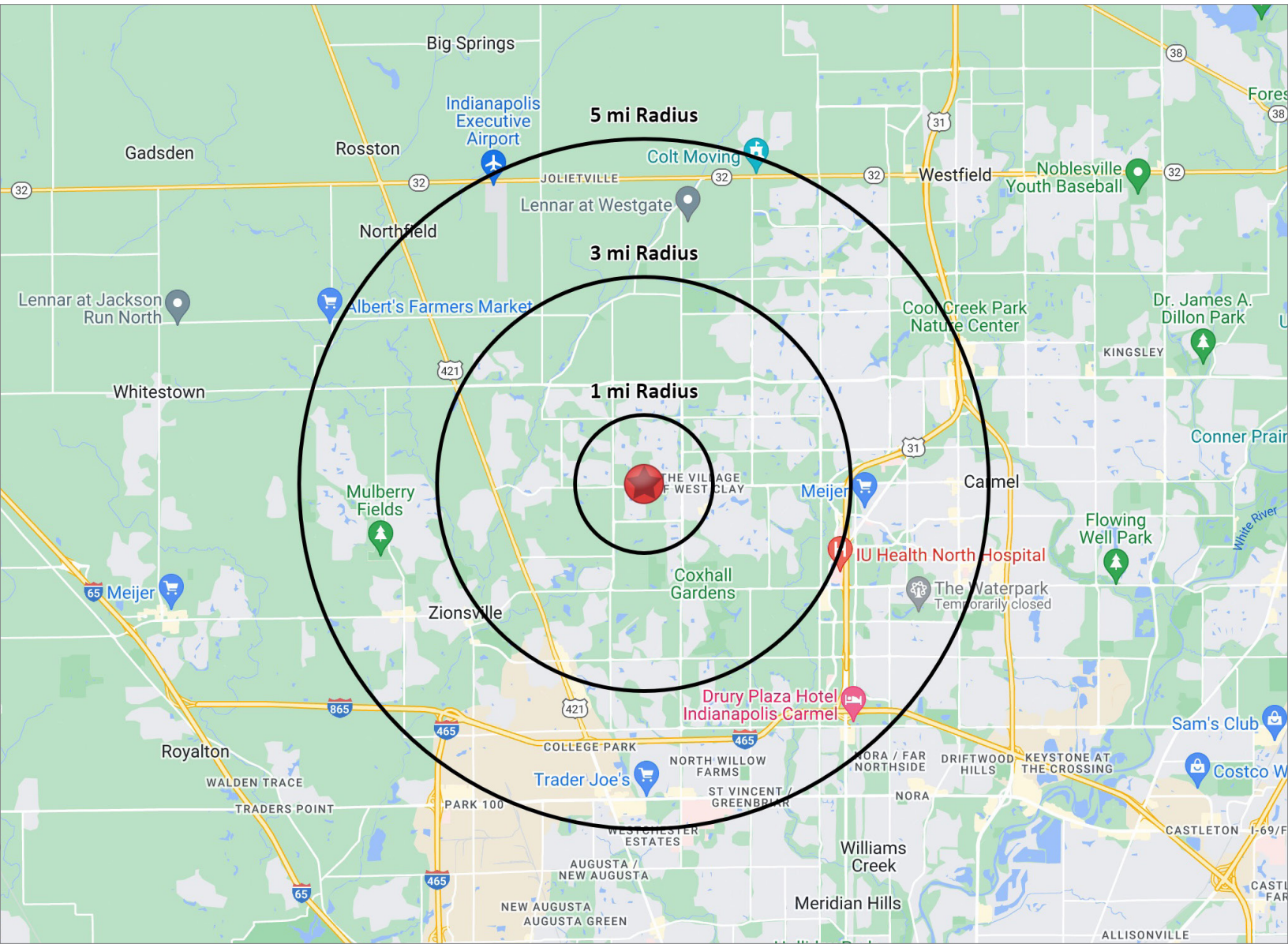
**Marc Jaffe, Senior Broker**  
D 317.201.5046  
mjaffe@cressy.com



## 2023 DEMOGRAPHICS

## RESIDENTIAL LAND FOR SALE

3000 W. 131st Street | Carmel, IN 46032



## POPULATION

1 MILE	8,422
3 MILE	44,950
5 MILE	123,926



## NUMBER OF HOUSEHOLDS

1 MILE	2,729
3 MILE	15,046
5 MILE	48,887



## AVERAGE HOUSEHOLD INCOME

1 MILE	\$276,656
3 MILE	\$257,936
5 MILE	\$178,706



## MEDIAN HOME VALUE

1 MILE	\$488,661
3 MILE	\$485,092
5 MILE	\$403,695



is the Global Brokerage Division  
of Cressy Commercial Real Estate.

**Marc Jaffe, Senior Broker**

D 317.201.5046

mjaffe@cressy.com